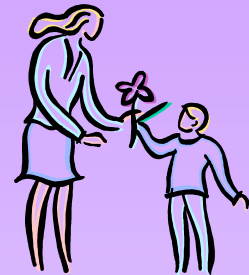


Moms of Young Children

A Fellowship and Support Group for Mothers of Children from Birth through the Elementary Years



*A Ministry of The Woodlands
Community Presbyterian Church*



SEPTEMBER 2011

Welcome Back, Moms!

Change is in the air- can you feel it? Our schedules and routines have changed now that the kids have gone back for another year of school. The church is building a new learning facility behind the sanctuary. And Moms of Young Children is adapting to all of the changes around us. Most of our format has remained the same, but you will notice a few changes we have made. We hope that you will make it a point to join us at a monthly meeting, a Bible study, use our new Super Saturday program, or just come and fellowship at some of our other scheduled activities.

As moms, wives, daughters, and sisters we often put ourselves last on our to-do list. We hope this group will help you pencil in a little "me" time during the month. Even if you work and can't attend our daily meetings, we would love to have you join us at our social events at night. And we will welcome any suggestions for other opportunities for us to meet and support one another on a regular basis.

We have a terrific fall line-up planned. We hope that you will be able to make it to as many events as your schedule will allow. If you have any questions regarding the many different areas of our ministry, please do not hesitate to contact anyone on the steering committee

In Christ's Service,

2011-2012 Steering Committee

Jody Carpenter

jodycarpenter2003@yahoo.com

Brenda Heinrich

brendakheinrich@gmail.com

Amy Lothringer

amylothringer@yahoo.com

Stephanie Keiser

stephaniekeiser1@gmail.com

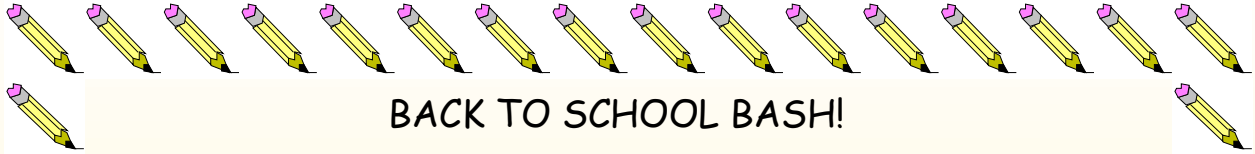
Stephanie Martin

ssmartin97@att.net

Loretta Gonzalez

loretta.m.gonzalez@gmail.com

No language can express the power and beauty and heroism of a mother's love. - Edwin H. Chapin



BACK TO SCHOOL BASH!

We hope that you will be able to join us on Monday, September 12 at 9:30 in CE 202 as we begin our year with a back to school bash. We would love to hear all your tips, tricks and helpful hints you have to get your family back into a routine and out the door on schedule. Feel free to bring in the products, papers, or systems that you use to show off. We LOVE to steal great ideas from other smart and clever mommies!

SUPER SATURDAYS ARE NEW!!

Due to lack of space—we can no longer offer Magic Mondays—the drop-off childcare program. Instead, we have just changed the day to Saturday. We feel that this change will be beneficial to everyone and hope that you can use a little free time to yourself one Saturday a month. The cost is \$10/child or \$20/2+ children per month. **Please pack a snack for your child, but please do not send any peanut products because ELP is a peanut-free facility.** A special release form must be completed prior to your child being able to participate in this program. Jody Carpenter will be taking reservations during the first meeting. Cash or check is accepted. Cost for the fall is \$50/1 child or \$100/2+ children.



Boundaries with Kids: How Healthy Choices Grow Healthy Children

by Drs. Henry Cloud and John Townsend

This year our book study will focus on how we, as parents, are responsible for setting boundaries for our children. The premise is that if we do this successfully, our children will grow up to lead balanced, productive and fulfilling adult lives.



Please bring cash or check to the first meeting if you are interested in participating in this group. Cost of the book is \$9.00. Stephanie Keiser will place an order with Amazon or you can always purchase your own copy. Even if you can not make it to the group discussion, please feel free to order a copy of the book to read and study at home.



FAITH, FRIENDS & FUN

We are excited to announce that Faith, Friends & Fun is beginning soon. This is a time for families and couples in their 30's and 40's to come together and fellowship in a relaxed atmosphere. We will meet the third Sunday of each month in the Fellowship Hall. This month we will form small groups and have dinner out at a restaurant in Panther Creek shopping center. Childcare for children ages 5 and under is available upon request. Elementary-aged children will all meet together with Susan Duncan and another set of parents to engage in games and seasonal activities. Contact Amy Lothringer to reserve a spot for your family.



Ladies' Night Out

Ladies, mark your calendar for Friday, Sept. 30! That will be the first Ladies' Night Out- but we are staying in, at Jody Carpenter's home. This year we are going to celebrate with a Spanish tapas theme. So watch your e-mail for further details and directions.

In October we plan to meet for dinner at La Trattoria, located on Research Forest, on Tuesday, October 18 at 7:00 PM. Our evenings together are always filled with great food, great friends and of course—lots of laughter. Hope to see you there!

"She is clothed with strength and dignity; she can laugh at the days to come. She speaks with wisdom, and faithful instruction is on her tongue... Her children arise and call her blessed."
Proverbs 31:25-26, 28

First Place 4 Health

The church is going to offer First Place 4 Health, a Christ-centered balanced weight-loss and healthy living program this fall during the Sunday school hour—9:45-10:45. The plan focuses on scripture and how to make better choices so that you too can lead a healthy lifestyle. Patty Ahern, a registered dietician, and church member will be leading the class. The church is even going to cover half the cost of the materials- so you will only pay \$40. Please go to www.firstplace4health.com for more information on this program. Sign-up at the ministry fair this Sunday or e-mail Stephanie Keiser.

WEDNESDAY AFTERNOON CHOIR

DOES YOUR CHILD LOVE TO SING? HAVE HER JOIN OUR CHILDREN'S CHOIR AT CHURCH. THE ANGEL VOICES CHOIR IS FOR CHILDREN AGES 4-2ND GRADE. BONNIE GRAHAM MEETS THEM IN THE FELLOWSHIP HALL TO LEARN SOME BASIC CHRISTIAN SONGS TO PERFORM IN CHURCH ON A SEASONAL BASIS. CHILDREN IN GRADES 3RD-6TH WILL MEET WITH MICHAEL VAUGHN. PRACTICE STARTS SEPT. 14TH AT 5:15 AND ALL ARE WELCOME.

SEPTEMBER 2011

Sun	Mon	Tue	Wed	Thu	Fri	Sat
				1	2	3
4	5 Labor Day	6	7	8	9	10
11	12 Moms Meeting 9:30-11:30 CE 202	13	14 Angel Voices Choir 5:15-6:00	15	16	17
18 Faith, Friends & Fun 5-7 PM Dinner Out	19	20	21 Angel Voices Choir 5:15-6:00	22	23	24 Super Saturday 3-6 PM
25	26 Bible Study 9:30-11:30 CE 202	27	28 Angel Voices Choir 5:15-6:00	29	30 Welcome Back Party at Jody Carpenter's 7PM	